

Leseblatt 17

mä lä tä rä sä dä nä schä bä kä wä

Blätter Bäcker Bälle Bär erklären Ärger

Gläser Hände Kälte Ärmel Wärme spät

kämmen Käse Lärm März Ärmel Äste

Rätsel Räder spät Träne Wärme Äste



In den Gläsern ist Dreck und Wasser.



Im Winter ist im Wald die Kälte.



Der Bär im Wald ist unter den Ästen.



Barbara isst Käse mit Butter und Brot.



Im Turnen wollen die Kinder alle Bälle.



Für jedes Mal lesen darfst du einen Smiley anmalen!

Unterschrift: _____

LESEBLATT Ä



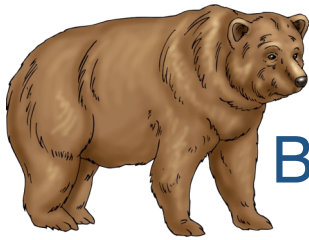
Blätter



Bäcker



Bälle



Bär



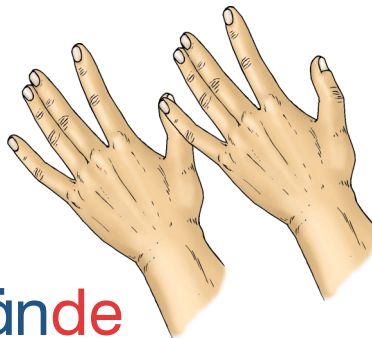
Ärger



Kälte



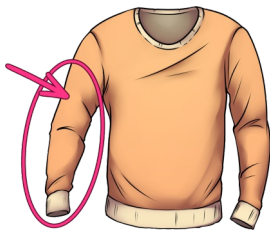
Gläser



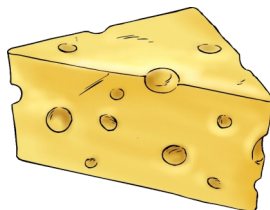
Hände



Wärme



Ärmel



Käse



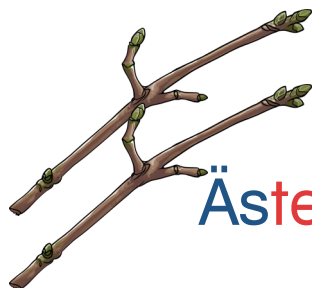
Rätsel



Räder



kämmen



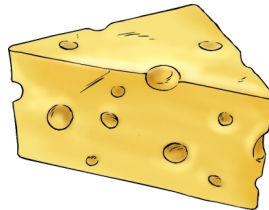
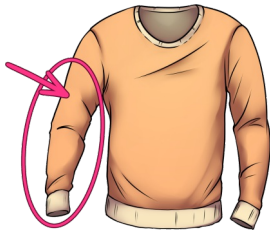
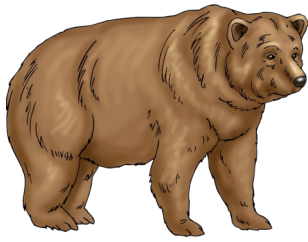
Äste

Tränen



spät

Bäcker • Kälte • Wärme • Ärmel • Käse • Rätsel
Bälle • Blätter • kämmen • spät • Räder • Bär





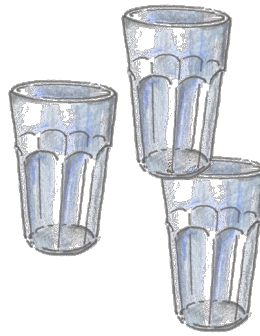
Three horizontal rectangular boxes for labeling: the top and bottom are white, and the middle one is light blue.



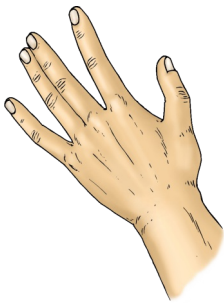
Three horizontal rectangular boxes for labeling: the top and bottom are white, and the middle one is light blue.



Three horizontal rectangular boxes for labeling: the top and bottom are white, and the middle one is light blue.



Three horizontal rectangular boxes for labeling: the top and bottom are white, and the middle one is light blue.



Three horizontal rectangular boxes for labeling: the top and bottom are white, and the middle one is light blue.



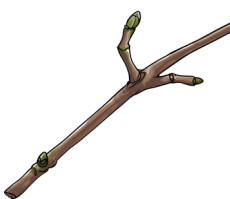
Three horizontal rectangular boxes for labeling: the top and bottom are white, and the middle one is light blue.



Three horizontal rectangular boxes for labeling: the top and bottom are white, and the middle one is light blue.



Three horizontal rectangular boxes for labeling: the top and bottom are white, and the middle one is light blue.



Three horizontal rectangular boxes for labeling: the top and bottom are white, and the middle one is light blue.



Three horizontal rectangular boxes for labeling: the top and bottom are white, and the middle one is light blue.